



FEMAS Sector Note No. 1 – Former Foodstuffs

These Sector Notes apply to businesses processing or [placing on the market](#) Former Foodstuffs for use as animal feed.

These Notes are not exhaustive, are intended to assist in the application of the corresponding requirements of the FEMAS Standard and are not to be considered in isolation.

Section 1 of these Sector Notes includes definitions of specific relevance to this sector.

Section 2 of these Sector Notes includes additional sector-specific information to assist Participants in complying with **Requirements, Interpretation, Guidance and Further Information** of the FEMAS Scheme. The FEMAS Scheme Rules provide the following definitions:

Requirement – Sets mandatory standards with which Applicants and Participants must comply to achieve and maintain certification.

Interpretation – Provides specific means for Applicants and Participants to achieve the desired outcome of the preceding Requirement. Applicants and Participants are expected to consider Interpretation and apply as relevant to their business. Failure to follow interpretation, resulting in the desired outcome of the Requirement not being achieved will lead to a non-conformance being raised against the requirement.

Guidance – Non-mandatory suggestions of useful tools and techniques for achieving and maintaining compliance or continuous improvement.

Further information – External sources of useful information, typically including references/ web links to documents or other sources of information.

NOTE: Revisions introduced in this edition of the Sector Notes are highlighted in Blue.

The assistance of the United Kingdom Former Foodstuffs Processors Association (UKFFPA) in preparing these Sector Notes is gratefully acknowledged.

For further information on the UKFFPA please contact:

UKFFPA
First Floor, Unit 4
The Forum, Minerva Business Park
Peterborough
PE2 6FT

1 Definitions

Former Foodstuffs	Products surplus to food industry requirements, which were manufactured for human consumption in full compliance with applicable food law but which are no longer intended for human consumption for practical or logistical reasons or due to problems of manufacturing or packaging defects or other defects and which do not present any feed safety risk.
--------------------------	---

2 Sector-Specific Notes

HACCP		
B 1.7	Interpretation	<p><i>Sector-specific potential hazards include but are not limited to:</i></p> <ul style="list-style-type: none"> • <i>Different types of packaging and residual packaging</i> • <i>Flavourings and colourants</i> • <i>Variability in levels of ingredients (e.g. Sodium bicarbonate, salt)</i> • <i>Rejected products</i> • <i>Foreign bodies</i> • <i>Presence of animal products prohibited in feed</i>

Raw Material Suppliers		
C 1.2	Requirement	<p>The Participant’s approval system for suppliers must include effective on-site audits of all sites supplying raw materials and/ or feed prior to first supply unless these sites are already certified in their own right to a scheme recognised by AIC and with a scope including the raw materials and/ or feed supplied. On-site audits must subsequently be carried out at a frequency dictated by risk assessment, to ensure feed safety is not compromised.</p>
C 1.2	Interpretation	<p>The Certification Body will select a number of raw material supply chains to be visited each year. This will typically be at least two collection sites per FEMAS certified site unless robust risk assessments and controls operated by the Participant allow this to be reduced.</p>
C 1.4	Requirement	<p>For all suppliers, Participants must have in place contracts which specify, as a minimum, the following feed safety criteria:</p> <ul style="list-style-type: none"> • A statement indicating the intended use as animal feed • A specification listing the types of former food and associated packaging included in the contract, and as appropriate, those that must be excluded. • The requirement for all businesses that take ownership of the former foodstuffs (including 3rd-party ‘waste’ contractors) and bulk hauliers (except those providing traction only) to be registered as feed businesses

Approval of Suppliers of Non-assured Feed (Gatekeeper)		
D 4.2	Requirement	The FEMAS Former Foodstuffs Direct Deliveries Decision Tree must be used to establish the suitability of a specific material/supplier combination for direct delivery without further processing.
D 4.3	Requirement	Suppliers of former foodstuffs within the UK/EU must be Feed Business Operators registered or approved by their national authorities under the Feed Hygiene Regulations 183/2005 as amended.
D 4.4	Requirement	Participants must supply the outcomes of the Decision Tree in Appendix 1 and copies of supplier audit reports to the Certification Body for approval, prior to first supply.

Third Party Contracted Hauliers		
E 3.1	Requirement	Direct deliveries of feed to farm must be made by certificated Participants of a scheme recognised by AIC (unless providing traction only).
E 3.3	Interpretation	<i>Hauliers who transport the Participant’s own demountable containers are considered to be traction only.</i>

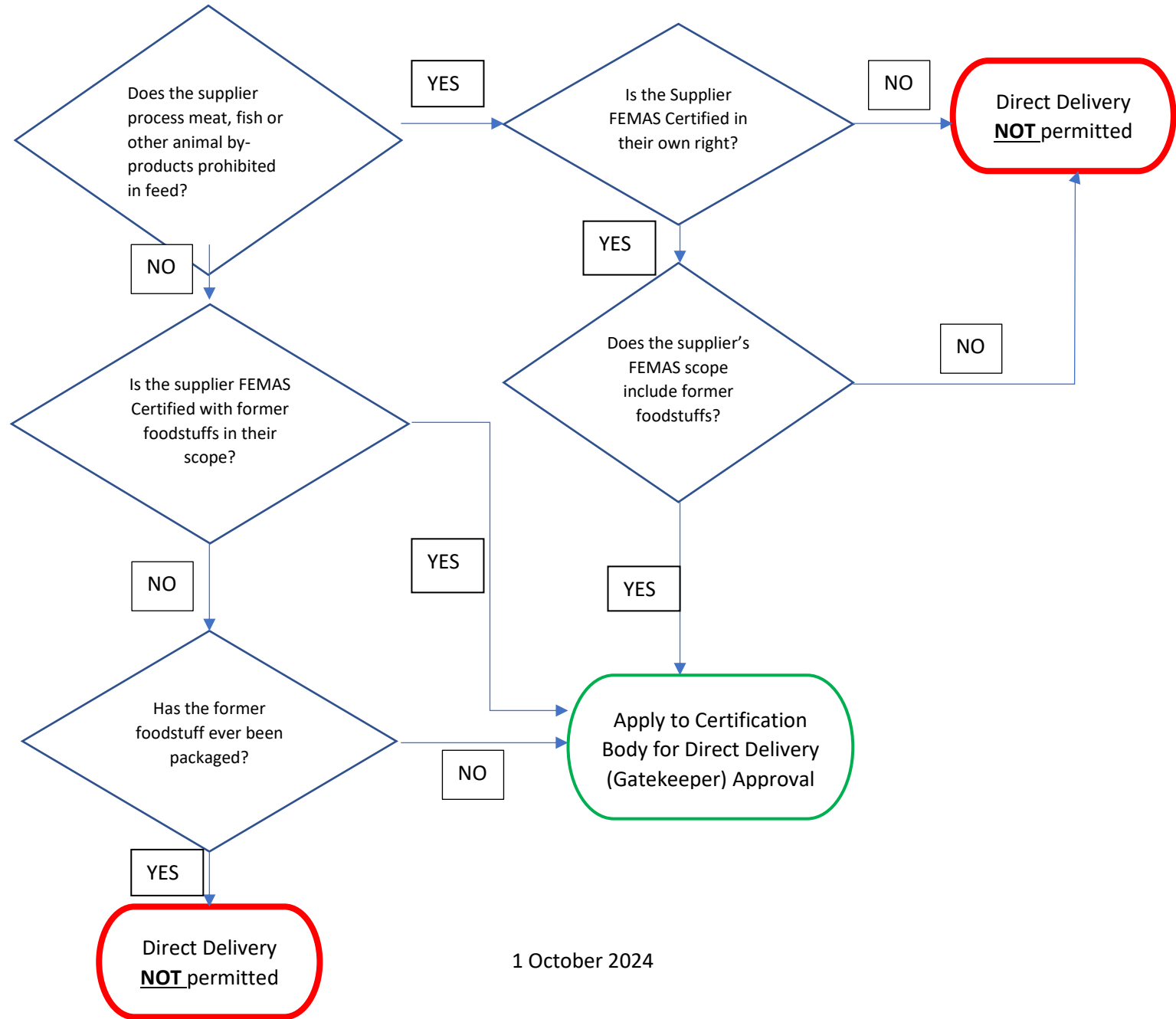
Labelling and Identification		
F3.2	Requirement	Feed products produced from Genetically Modified crops must be labelled in accordance with any Regulatory requirements applicable in the countries where they are placed on the market .
F3.2	Requirement	Where a Participant is supplying former foodstuffs that require further processing they must ensure each delivery has a label stating: ‘Former food only to be used as a feed material after... (designation of the adequate process in accordance with part B of the Annex to Regulation (EU) No 68/2013)’ .

Physical contamination control		
G 1.11	Requirement	Where animal products prohibited in feed are stored, produced or available on site, they must not contaminate raw materials or feeds.

Analysis Schedule		
I 5.1	Requirement	Analysis schedules must include measurement of residual packaging on a weekly basis as a minimum, unless the former foodstuff(s) has never been packaged. The rejection limit for presence of residual packaging must be set at the <i>de facto</i> tolerance agreed with the Competent Authorities. Any batch failing this test must be rejected or reworked and the reasons for the failure be investigated.

Analysis Methods		
17.3	Interpretation	Control of Packaging Residues <i>The approved method for monitoring residual packaging can be found here:</i> https://www.agindustries.org.uk/resource/acaf-13-05-paper---packaging-in-surplus-foods-16-january-2013.html

Appendix 1 Former Foodstuffs Direct Deliveries Decision Tree





Agricultural Industries Confederation Limited
First Floor, Unit 4 The Forum,
Minerva Business Park, Lynch Wood,
Peterborough, PE2 6FT.
Telephone: 01733 385230
E-mail: enquiries@agindustries.org.uk
www.agindustries.org.uk

