

## EU Exit and state of play

We are fast approaching the end of the 'transition period' when the UK will be entirely out of the EU and its institutions. With such little time to go, we cannot overlook the number of outstanding issues which AIC Members still need clarity on. These include the precise processes that businesses will need to undertake in order to send products to the EU or Northern Ireland, the extent to which tariffs will apply on either imports or exports, as well as the scope of regulatory and mutual recognition of products from day one. As ever, we have to take an approach of 'prepare for worst, hope for the best', which has become such a frequent feature of the EU exit over the past two years.

We do, however, know some certainties. The UK Government is clear that it wishes to leave the EU Single Market and Customs Union. As a result, we can

expect friction on trade. The question now is to what extent that friction will apply, and this is contingent on the deal. We do know there will be a UK specific REACH regime and a UK 'Border Operating Model' on imports, for example. Members are encouraged to familiarise themselves with both and understand what it may mean for their business. As ever, AIC is on hand to help advise Members throughout the process and provide regular sector-specific briefings, into what will be a frenetic end of 2020.



**Ed Barker**  
Head of Policy AIC



## Welcome

Welcome to the latest edition of the AIC Business Insight newsletter.

In this edition, we talk about the EU Exit, provide a Covid-19 update, and give details of how you can get a complimentary compliance health check from CRONER. CRONER also offer a Job Retention Scheme Extension – Furlough FAQs – showcasing questions received from members on the challenges being faced during Covid-19, particularly relating to the latest furlough scheme extension.

For detailed answers, visit: [aic.croneri.co.uk/feature-articles/extended-job-retention-scheme-furlough-faqs-november-2020-onwards](https://aic.croneri.co.uk/feature-articles/extended-job-retention-scheme-furlough-faqs-november-2020-onwards)

Finally, the back page is dedicated to the Farm Safety Partnership, which looks at the most common causes of farm fatalities and how to make sure you or your farm business don't become the next statistic.



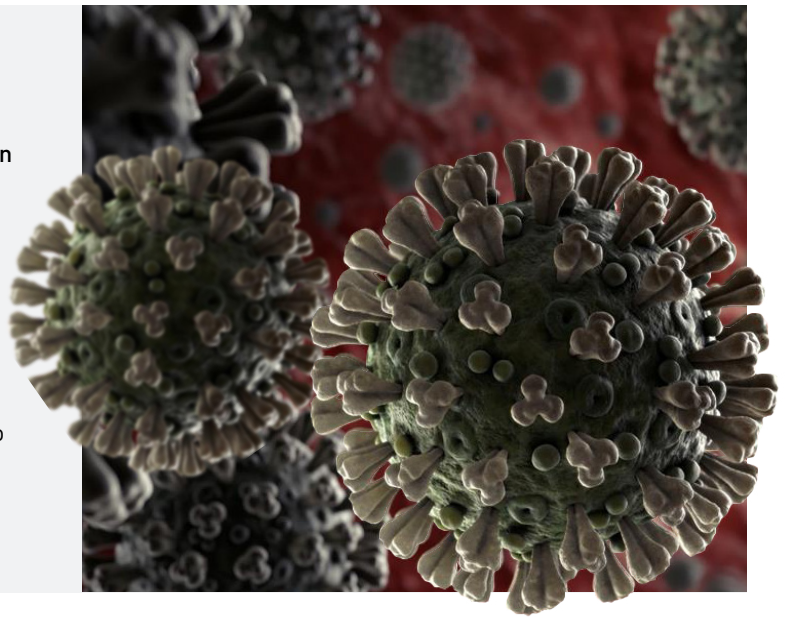
**David Moss**  
Technical  
Manager AIC

## COVID-19 update

AIC continues to work hard with the government during the Covid-19 pandemic. As the second lockdown hits hard across the UK, the top priority remains to comply with the rules and halt the spread of the virus while ensuring that feed and food supplies continue with minimal disruption.

As the UK enters the new Covid-19 lockdown, the agrisupply chain will keep working due to the critical worker status that AIC achieved earlier this year. This will ensure that the agri-food supply chain continues to operate as efficiently and robustly as possible.

For further Covid-19 information visit [www.agindustries.org.uk/coronavirus](http://www.agindustries.org.uk/coronavirus)



## AIC/CRONER compliance health check

All AIC Members are entitled to a complimentary visit from their local Croner Business Manager.

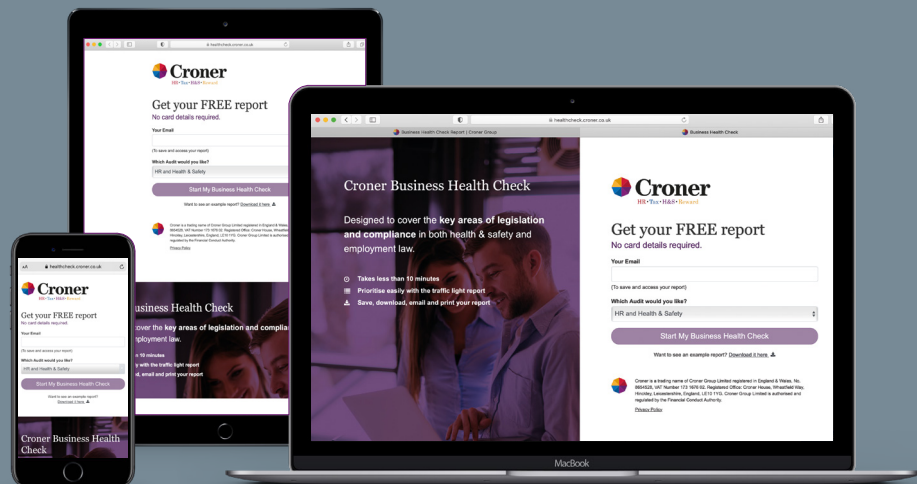
Taking approximately one hour, the Croner business manager will discuss your current approach for keeping up to date with changes in workplace legislation, including the steps you take to achieve employment and health and safety compliance.

The session will help you identify any areas where your business is exposed to risk or, if you already have your policies and procedures in place, how you can keep them up to date.

The Croner business manager is not a specialist health & safety or employment consultant, but can discuss your current approach at a business level. If there are areas of concern that you would like to investigate further or find a solution to, they can recommend further action such as audits, risk assessments, documentation updates and other solutions that suit your objectives and budget.

AIC Members benefit from preferential rates if you choose Croner for your compliance solutions.

Complete the form on the Croner Business Insight homepage to book a free compliance health check with your local Croner business manager: [www.croner.co.uk/services/company-health-check](http://www.croner.co.uk/services/company-health-check)

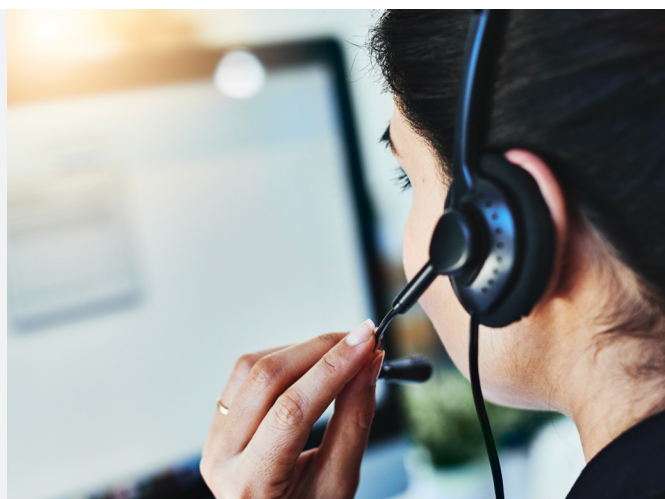


## Winter 2020

As part of your association membership, you have free and instant access to specialist advice to help your business navigate challenges brought by the pandemic and wider workplace matters.

Croner, our trusted helpline providers, give examples below of popular questions they are receiving from members.

Croner can give you pragmatic guidance to assist with the changing government schemes, business restructure, local measures, and more. Call **0844 561 8133** and quote your association number to speak with an expert today.



## CRONER - Job Retention Scheme Extension – Furlough FAQs

On 31st October 2020, it was announced that the Job Retention Scheme – or “furlough” – was to be extended until 31st March 2021. Below are some key FAQs concerning what we currently know about the extension. (At the time of writing, full details on how the JRS will operate during November are still awaited. However, initial details have been published, on which these FAQs are based.)

For detailed answers, more questions and updated information visit <https://aic.croneri.co.uk/feature-articles/extended-job-retention-scheme-furlough-faqs-november-2020-onwards>

### Q. Which employers can use the extended furlough scheme?

A. All employers with a UK bank account and UK PAYE schemes can ...

### Q. Which employees can be furloughed under the extended scheme?

A. To be eligible to be claimed for under this extension, employees must ...

### Q. How much is the grant?

A. Eligible employers who furlough eligible employees will be able to obtain a grant from the JRS to cover ...

### Q. Will I need to obtain agreement from employees to be furloughed under the extended scheme?

A. In all cases, you should discuss the situation with employees ...

### Q. Can employees take annual leave during furlough under the extended scheme?

A. Further guidance is needed on this; however, it is expected that annual leave will ...

### Q. Can I claim from the extended scheme for employees who are serving their notice?

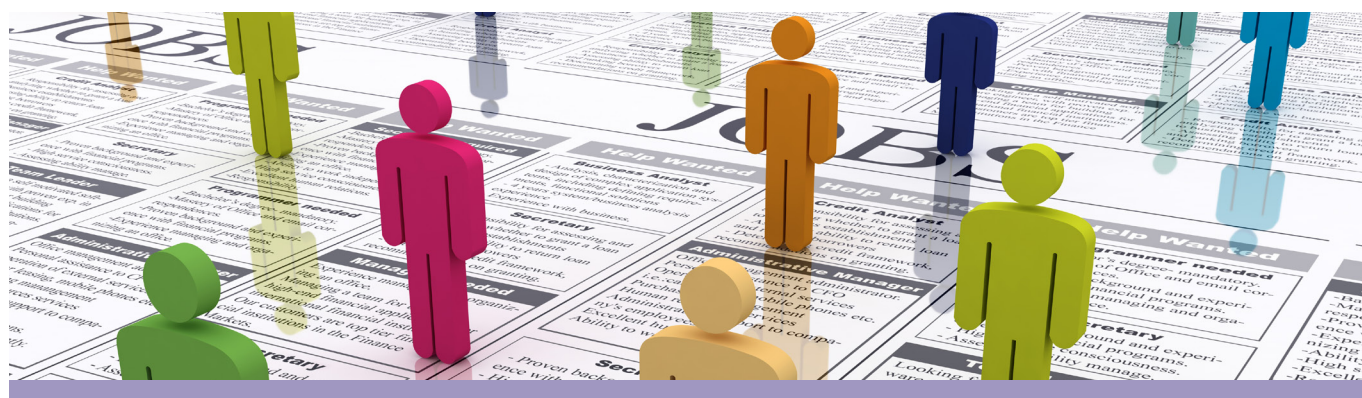
A. Some employers may have taken the decision to make employees redundant due to the impact of ...

### Q. Can employees do any work when on furlough under the extended scheme?

A. Previous rules also prohibited the employee from doing any work for you during ...

### Q. What should I do if I have already agreed with employees that they will be placed into the Job Support Scheme?

A. Due to the very late confirmation that the JRS was to be extended, some employers may have already ...



## Farm Safety Partnership

Sadly, every year there are a number of fatalities on farms around the UK. In many cases these incidents could have been prevented had safety measures been followed. In some cases, the deaths occurred as a result of not having safety measures in place at all. Below are examples of the most common causes of death on farm. We hope that by raising the profile it might just prevent the next fatality from occurring.

1) **Working at height** – contracting a qualified contractor is always the safest approach to protect you and your business. If you decide not to use a contractor, make sure you risk assess the building and roof before you set foot on it. Most farm buildings have concrete below. If the roof gives way, the chances of you not ending up seriously injured or dead are slim. Always plan ahead. Always undertake a full risk assessment before commencing any work at height. Always seek professional advice if you are unsure of the risks.

2) **ATVs** are an essential tool for many farmers to get to places other vehicles just cannot reach. Although machines should be maintained to road legal requirements, many are not. As a result, the risk of an accident on a farm ATV is a lot higher than a road legal machine. ATVs escape motorcycle law because they have 4 wheels and so wearing a helmet isn't legal. Add to this the manner in which they behave in certain circumstances means it is very likely, at some stage, that an ATV rider will be ejected from their vehicle. In most cases resulting in an ATV death, the rider would have likely survived if they had been wearing a helmet.



For more information, please visit [www.nfuonline.com/cross-sector/farm-business/farm-safety-partnership](http://www.nfuonline.com/cross-sector/farm-business/farm-safety-partnership)