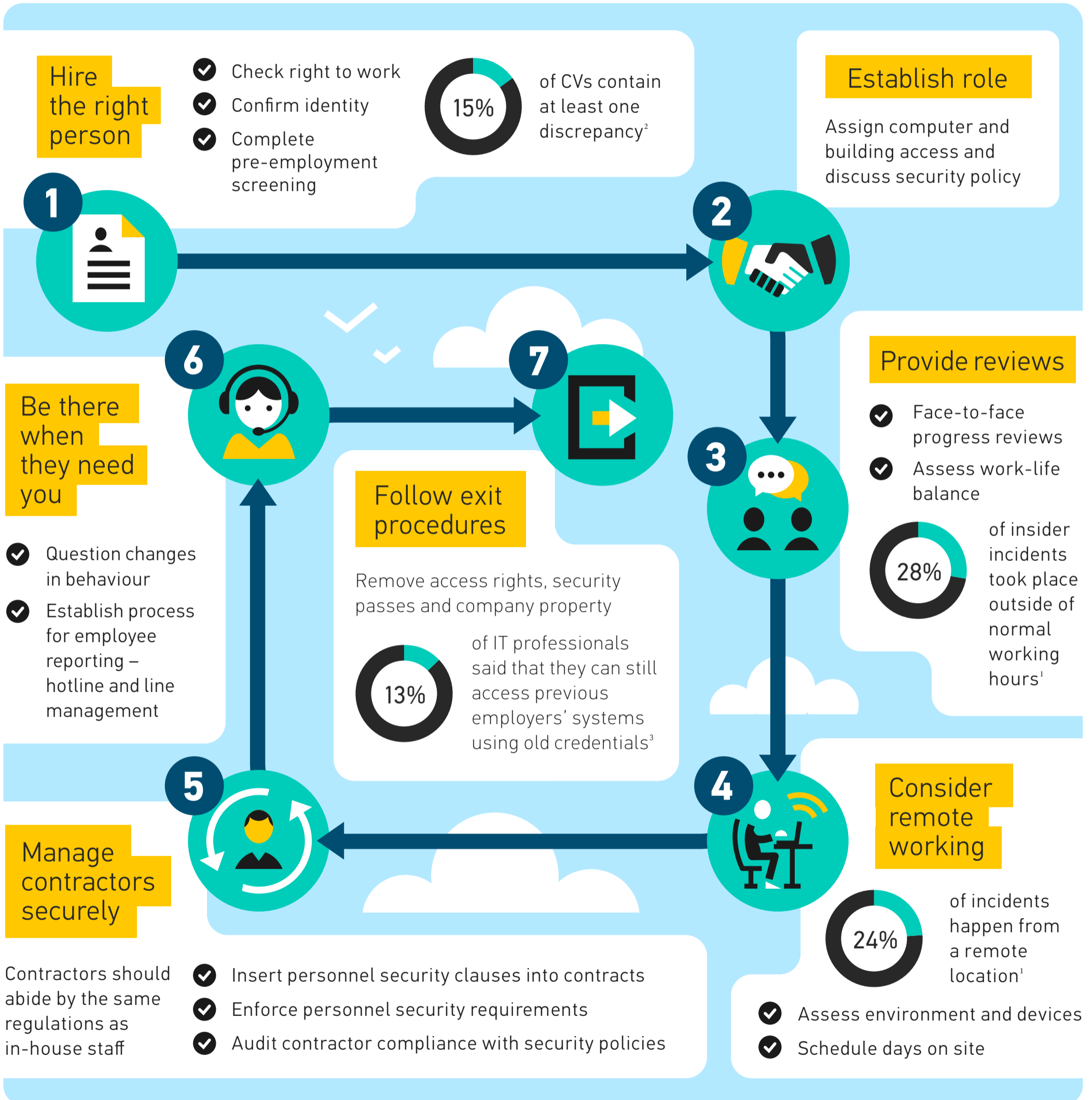


Are you thinking about it?

Organisations should consider Personnel Security measures from the moment they employ someone to the moment they leave.



While pre-employment screening helps with recruitment, organisations need to monitor attitude changes and events that can affect employees over time.

FOR MORE INFORMATION PLEASE READ ONGOING PERSONNEL SECURITY: A GOOD PRACTICE GUIDE, AT WWW.CPNI.GOV.UK